

Regional Workshop - Danville Area

August 1, 2019

- Activity Centers
- Freight dependent
 - Knowledge
 - Local serving
 - Ports
 - Amtrak/Passenger Rail Stations
 - Airports
- Interstates

0

1 - 10,000

10,000 - 25,000

25,000 - 50,000

50,000 - 75,000

Greater than 75,000
- Other Selected Limited Access Facilities
- Rail Network

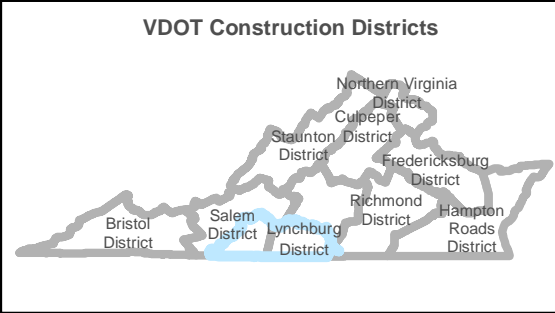
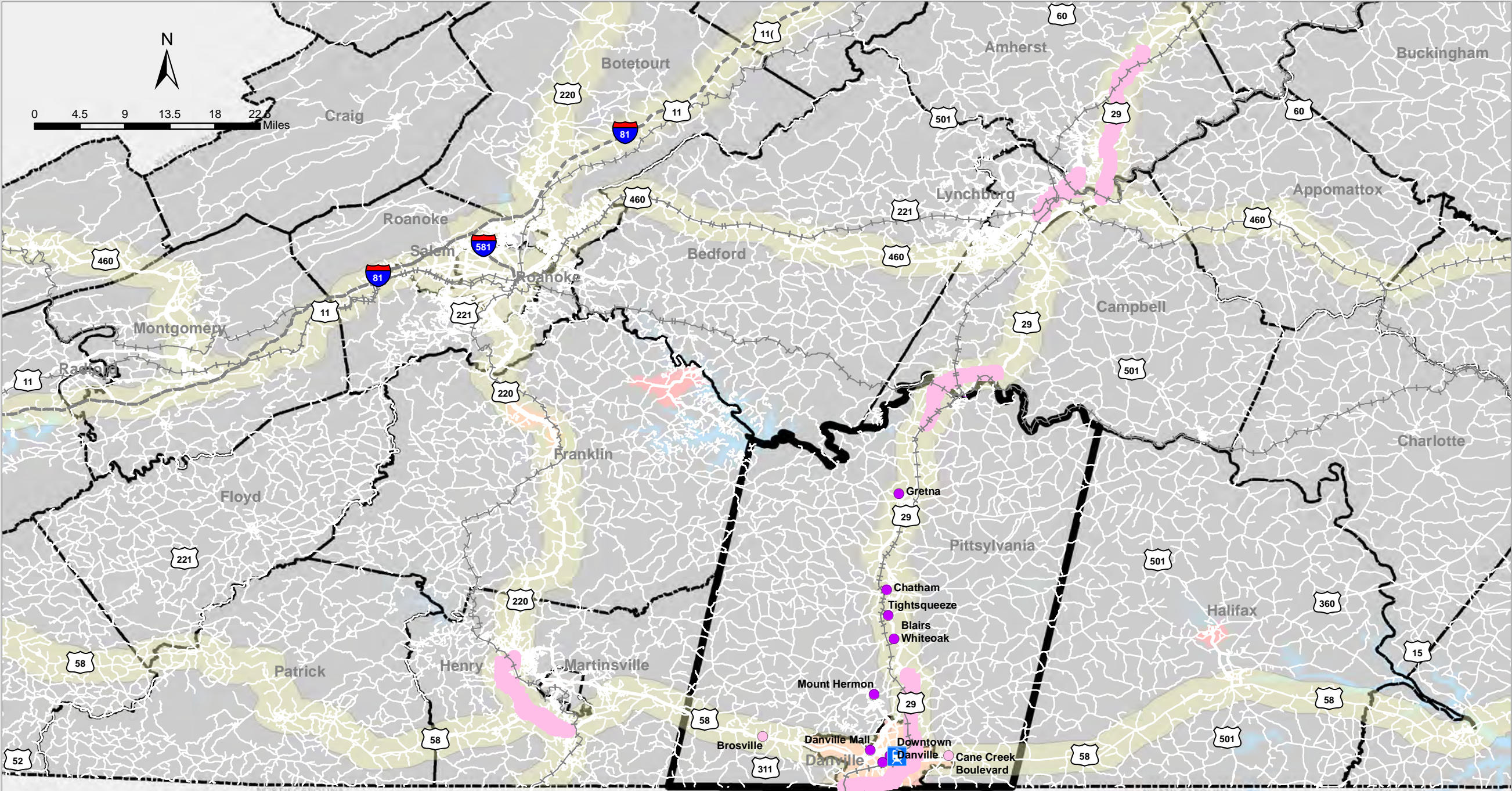
Urban Development

Buffer around Primary COSS Facilities

Regional Network

Counties and Cities

Water





Office of
INTERMODAL
Planning and Investment



VTRANS | VIRGINIA'S
TRANSPORTATION PLAN

Date: 8/13/2019

This depiction of measures and data shown on this map are intended to be used as an aid in discussing Mid-term Needs. This depiction of measures and data do not represent Mid-Term Needs. They are one of several inputs used in the determination of Needs and are not the sole determinant.

DRAFT

Congestion Measure for Interstates and Select Limited Access Facilities: Danville Area

August 1, 2019

Percent Person of Miles Travel In
Excessively Congested Conditions,
(PECC),
Weekday, 60% of Posted Speed Limit

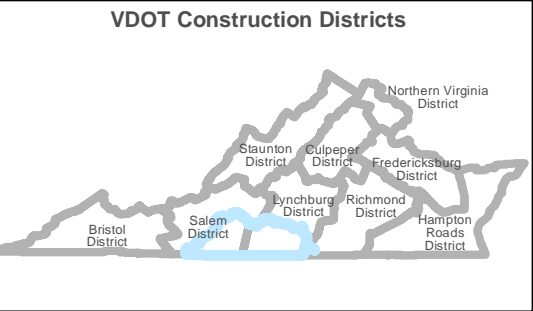
- 0% - 10%
- 10% - 15%
- 15% - 20%
- 20% - 25%
- Greater than 25%
- No Data

Activity Centers

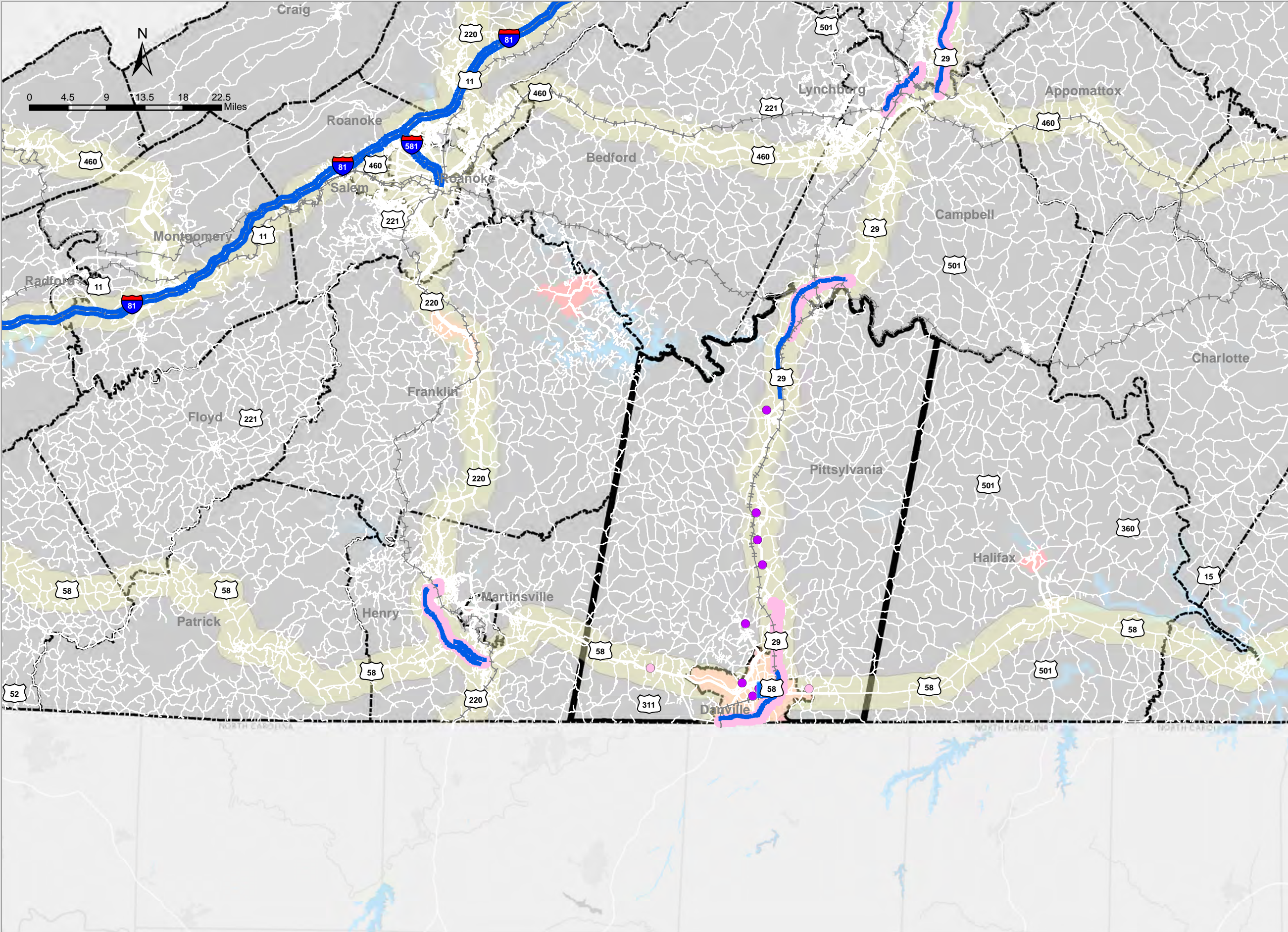
- Freight dependent
- Knowledge
- Local serving
- Ports
- Amtrak/Passenger Rail Stations
- Airports
- Interstates

Annual Average Daily Traffic
(AADT)

- 0
- 1 - 10,000
- 10,000 - 25,000
- 25,000 - 50,000
- 50,000 - 75,000
- Greater than 75,000
- Rail Network
- Other Selected Limited Access Facilities
- Buffer around Primary COSS Facilities
- Urban Development Areas
- Regional Network
- Counties and Cities
- Water



Date: 8/13/2019



The depiction of measures and data shown on this map is intended to be used as an aid in discussing Mid-term Needs. This depiction of measures and data does not represent Mid-Term Needs. They are two of several inputs used in the determination of Needs and are not the sole determinants.

DRAFT

Congestion Measure for Interstates and Select Limited Access Facilities: Danville Area

August 1, 2019
Percent Person of Miles Travel In
Excessively Congested Conditions,
(PECC),
Weekday, 75% of Posted Speed Limit

- 0% - 10%
- 10% - 15%
- 15% - 20%
- 20% - 25%
- Greater than 25%
- No Data

Activity Centers

- Freight dependent
- Local serving
- Ports
- Amtrak/Passenger Rail Stations
- Airports
- Interstates

Annual Average Daily Traffic (AADT)

- 0
- 1 - 10,000
- 10,000 - 25,000
- 25,000 - 50,000
- 50,000 - 75,000
- Greater than 75,000

Rail Network

Other Selected Limited Access Facilities

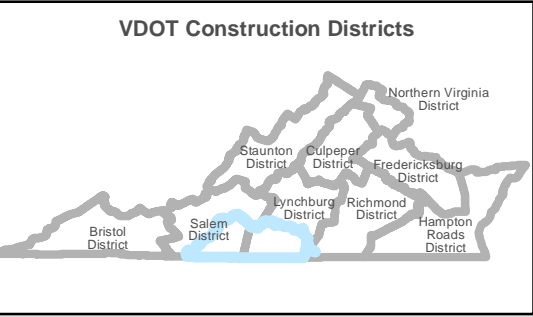
Buffer around Primary COSS Facilities

Urban Development

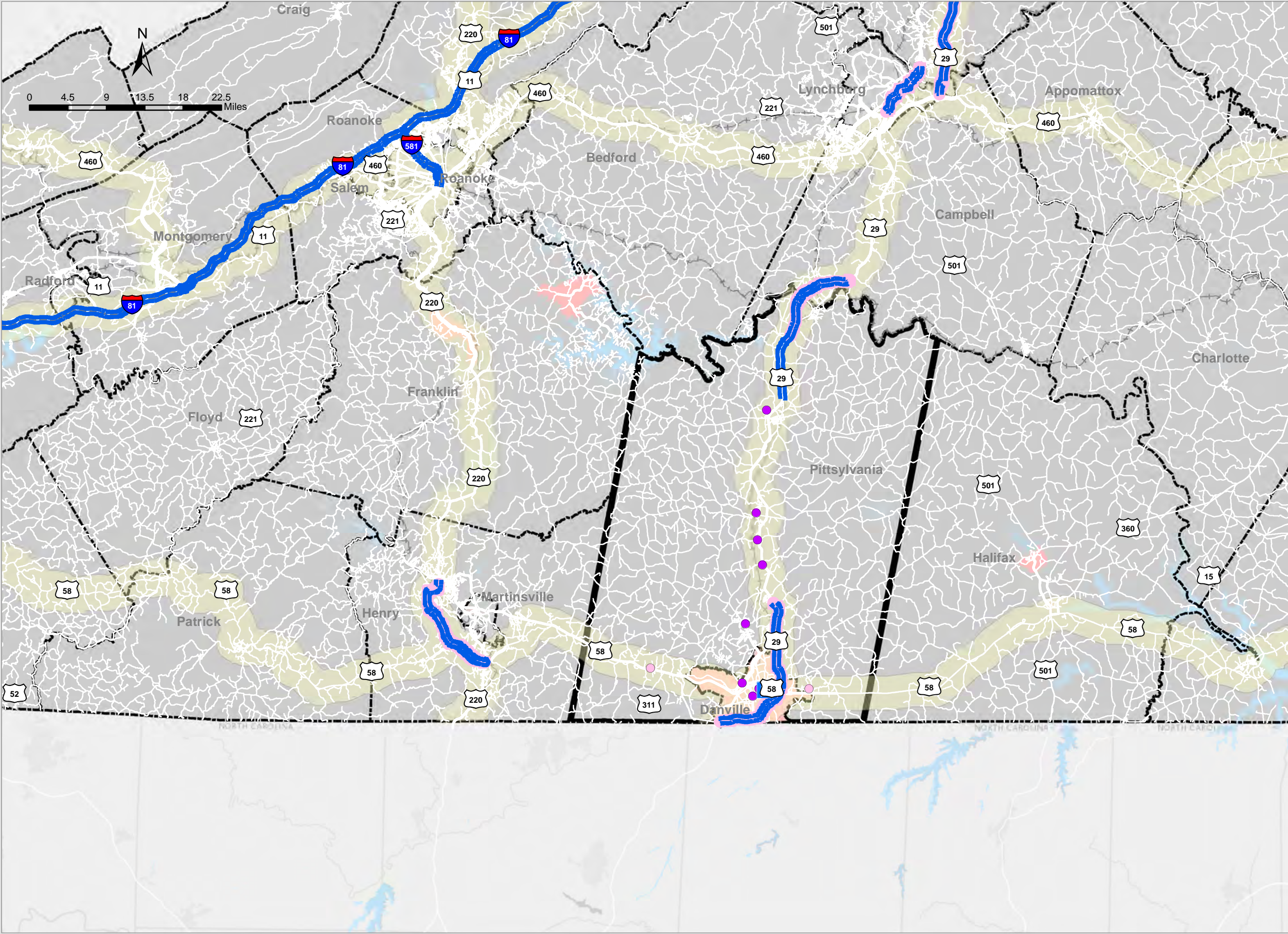
Regional Network

Counties and Cities

Water



Date: 8/13/2019



The depiction of measures and data shown on this map is intended to be used as an aid in discussing Mid-term Needs. This depiction of measures and data does not represent Mid-Term Needs. They are two of several inputs used in the determination of Needs and are not the sole determinants.

DRAFT

Congestion Measure for Interstates and Select Limited Access Facilities: Danville Area

August 1, 2019

Percent Person of Miles Travel In
Excessively Congested Conditions,
(PECC),
Weekday, 90% of Posted Speed Limit

- 0% - 10%
- 10% - 15%
- 15% - 20%
- 20% - 25%
- Greater than 25%
- No Data

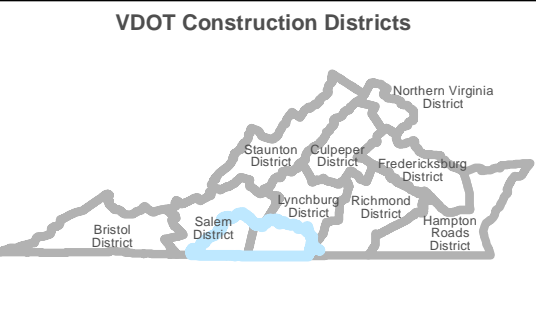
Activity Centers

- Freight dependent
- Knowledge
- Local serving
- Ports
- Amtrak/Passenger Rail Stations
- Airports
- Interstates

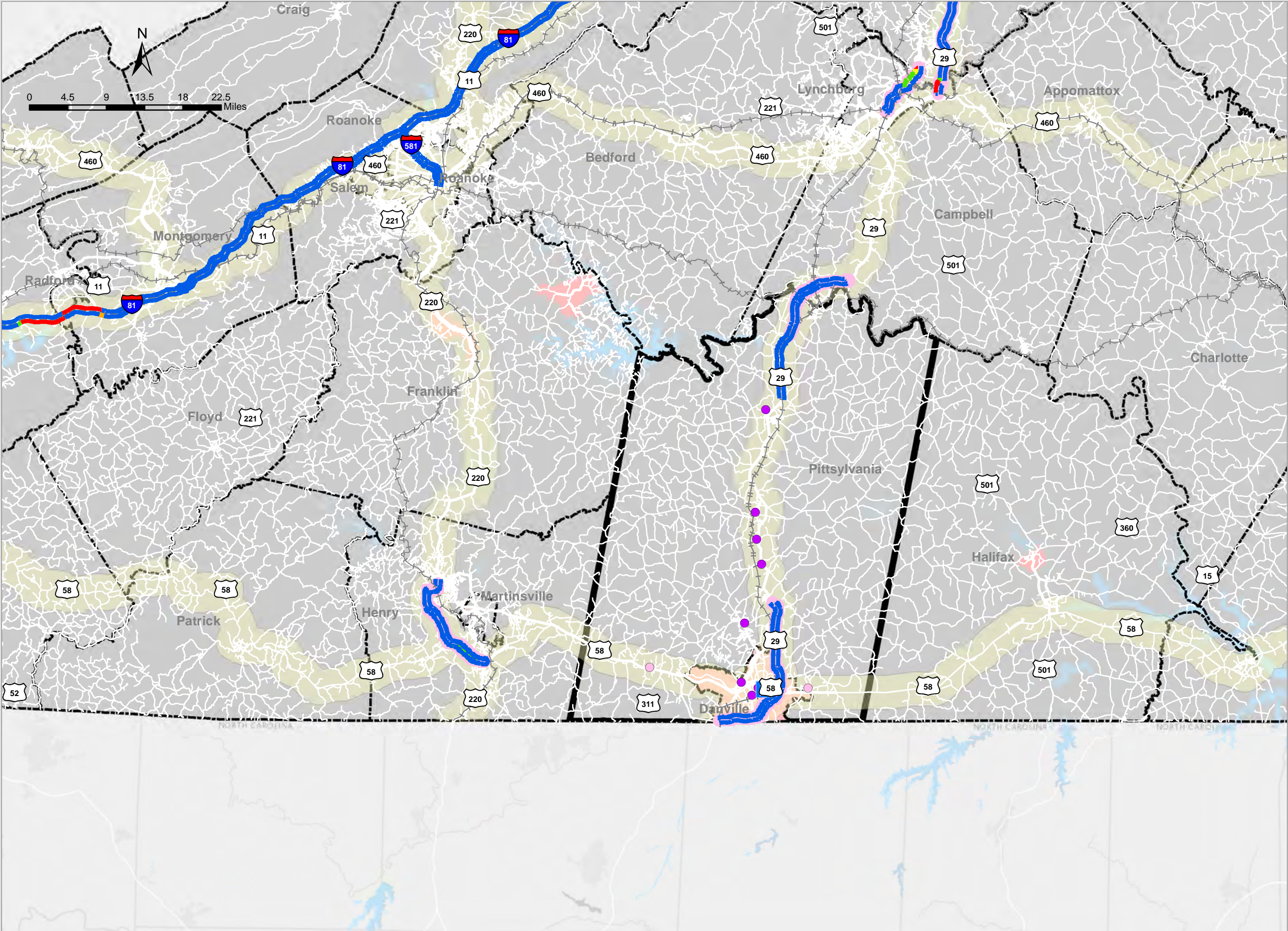
Annual Average Daily Traffic (AADT)

- 0
- 1 - 10,000
- 10,000 - 25,000
- 25,000 - 50,000
- 50,000 - 75,000
- Greater than 75,000

- Rail Network
- Other Selected Limited Access Facilities
- Buffer around Primary COSS Facilities
- Urban Development
- Regional Network
- Counties and Cities
- Water



Date: 8/13/2019



The depiction of measures and data shown on this map is intended to be used as an aid in discussing Mid-term Needs. This depiction of measures and data does not represent Mid-Term Needs. They are two of several inputs used in the determination of Needs and are not the sole determinants.

DRAFT

Congestion Measure for Non-Limited-Access COSS and Regional Network: Danville Area

August 1, 2019

minimum TTI value shown 1.5

- 1.5 - 2.0
- 2.0 - 2.5
- 2.5 - 3.0
- Greater than 3.0

Activity Centers

- Freight dependent
- Knowledge
- Local serving
- Ports
- Amtrak/Passenger Rail Stations
- Airports
- Interstates

Annual Average Daily Traffic (AADT)

- 0
- 1 - 10,000
- 10,000 - 25,000
- 25,000 - 50,000
- 50,000 - 75,000
- Greater than 75,000

Other Selected Limited Access Facilities

Buffer around Primary COSS Facilities

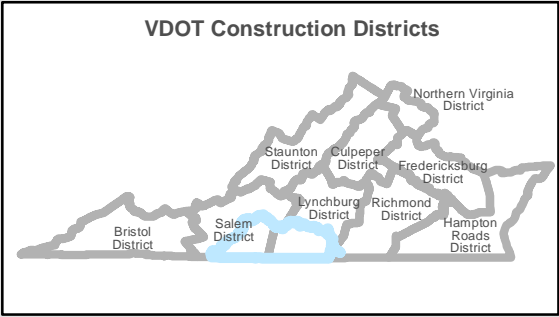
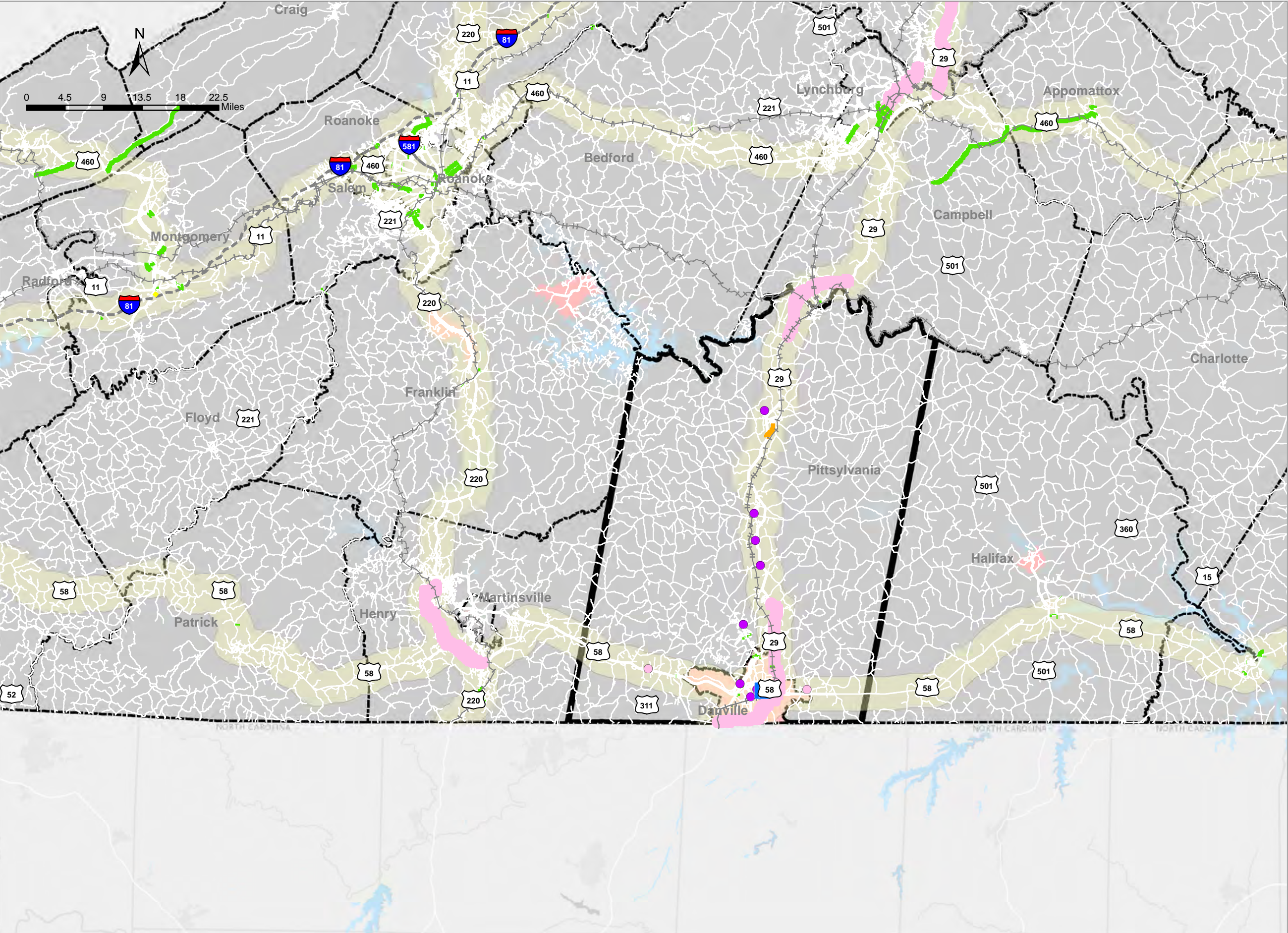
Rail Network

Urban Development Areas

Regional Network

Counties and Cities

Water





Office of
INTERMODAL
Planning and Investment



VTRANS | VIRGINIA'S
TRANSPORTATION PLAN

Date: 8/13/2019

The depiction of measures and data shown on this map is intended to be used as an aid in discussing Mid-term Needs. This depiction of measures and data does not represent Mid-Term Needs. They are two of several inputs used in the determination of Needs and are not the sole determinants.

DRAFT

Unreliable Delay (UD) - Number of person-hours of delay during Unreliable Conditions: Danville Area

August 1, 2019
Minimum 80th/50th percentile
travel time equal to 1.5 or higher -
Weekday

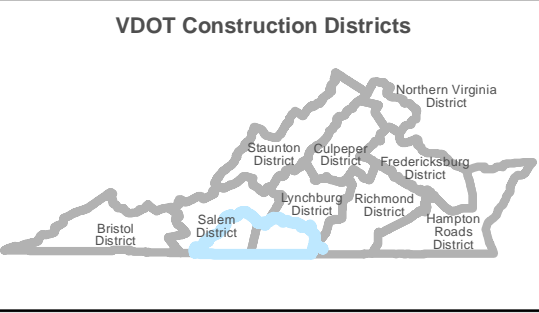
- 0 - 750
- 750 - 2,600
- 2,600 - 7,400
- 7,400 - 21,800
- >21,800

Activity Centers

- Freight dependent
- Knowledge
- Local serving
- Ports
- Amtrak/Passenger Rail Stations
- Airports
- Interstates

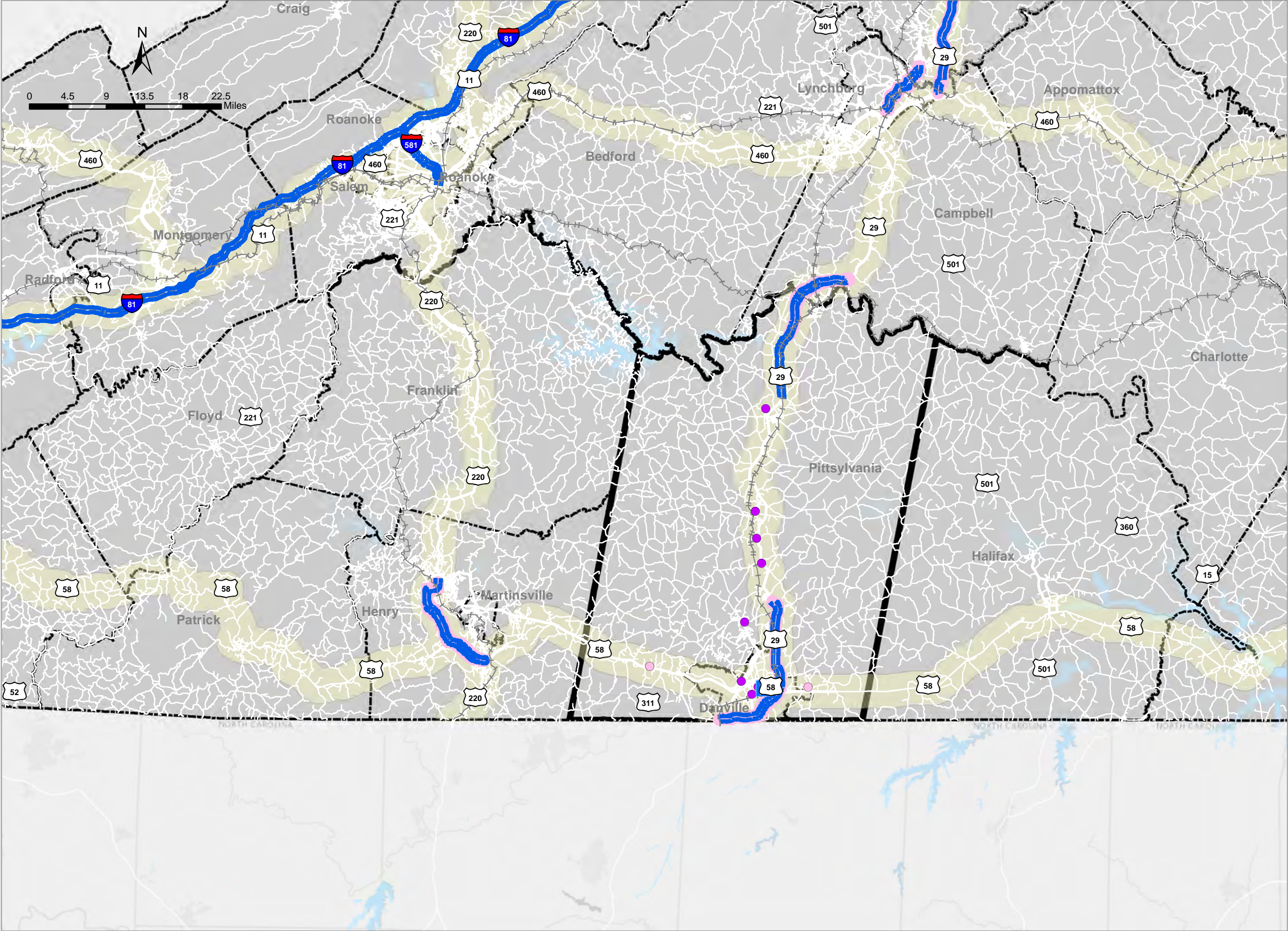
Annual Average Daily Traffic (AADT)

- 0
- 1 - 10,000
- 10,000 - 25,000
- 25,000 - 50,000
- 50,000 - 75,000
- Greater than 75,000
- Rail Network
- Other Selected Limited Access Facilities
- Buffer around Primary COSS Facilities
- Urban Development Areas
- Regional Network
- Counties and Cities
- Water



VTRANS VIRGINIA'S
TRANSPORTATION PLAN

Date: 8/13/2019



The depiction of measures and data shown on this map is intended to be used as an aid in discussing Mid-term Needs. This depiction of measures and data does not represent Mid-Term Needs. They are two of several inputs used in the determination of Needs and are not the sole determinants.

DRAFT

Unreliable Delay (UD) - Number of person-hours of delay during Unreliable Conditions: Danville Area

Map
3B

August 1, 2019

Minimum 80th/50th percentile
travel time equal to 1.5 or higher -
Weekend

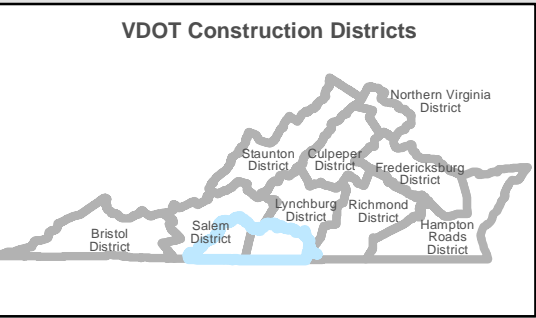
- 0 - 750
- 750 - 2,600
- 2,600 - 7,400
- 7,400 - 21,800
- >21,800

Activity Centers

- Freight dependent
- Knowledge
- Local serving
- Ports
- Amtrak/Passenger Rail Stations
- Airports
- Interstates

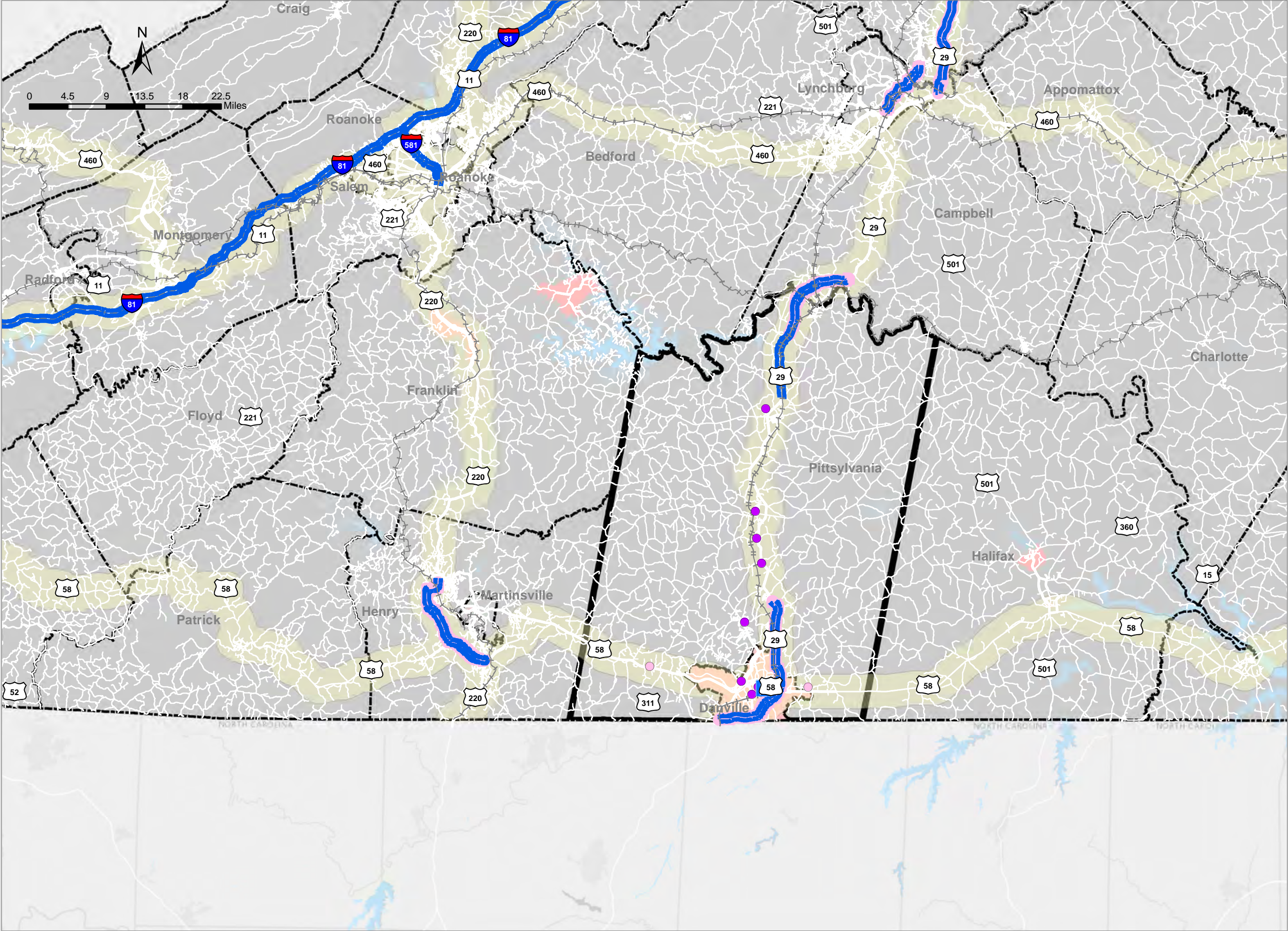
Annual Average Daily Traffic (AADT)

- 0
- 1 - 10,000
- 10,000 - 25,000
- 25,000 - 50,000
- 50,000 - 75,000
- Greater than 75,000
- Rail Network
- Other Selected Limited Access Facilities
- Buffer around Primary COSS Facilities
- Urban Development Areas
- Regional Network
- Counties and Cities
- Water



VTRANS | VIRGINIA'S
TRANSPORTATION PLAN

Date: 8/13/2019



The depiction of measures and data shown on this map is intended to be used as an aid in discussing Mid-term Needs. This depiction of measures and data does not represent Mid-Term Needs. They are two of several inputs used in the determination of Needs and are not the sole determinants.

DRAFT

Reliability Measure for Non-Limited-Access COSS and Regional Network: Danville Area

August 1, 2019

Minimum BTI value
shown is 0.5

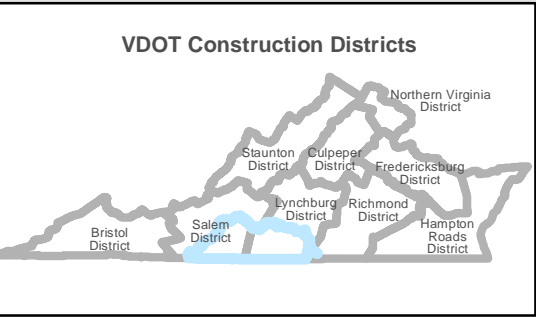
- 0.5 - 1.0
- 1.0 - 1.5
- 1.5 - 2.0
- 2.0 - 2.5
- Greater than 2.5

Activity Centers

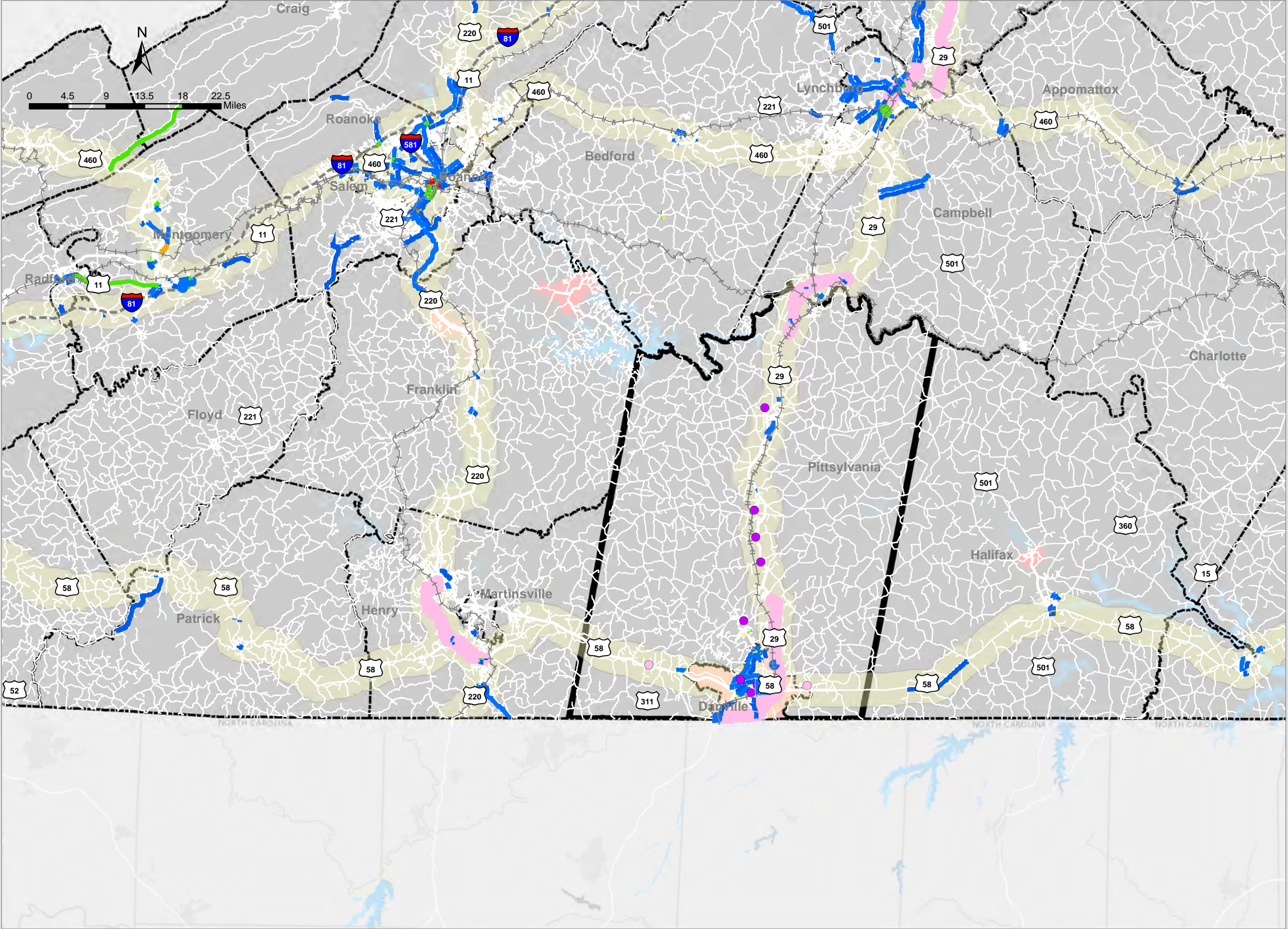
- Freight dependent
- Knowledge
- Local serving
- Ports
- Amtrak/Passenger Rail Stations
- Airports
- Interstates

Annual Average Daily Traffic (AADT)

- 0
- 1 - 10,000
- 10,000 - 25,000
- 25,000 - 50,000
- 50,000 - 75,000
- Greater than 75,000
- Rail Network
- Other Selected Limited Access Facilities
- Buffer around Primary COSS Facilities
- Urban Development
- Regional Network
- Counties and Cities
- Water



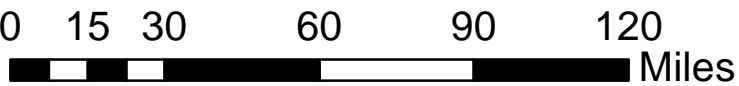
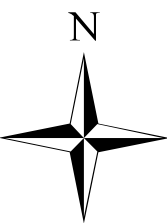
Date: 8/13/2019



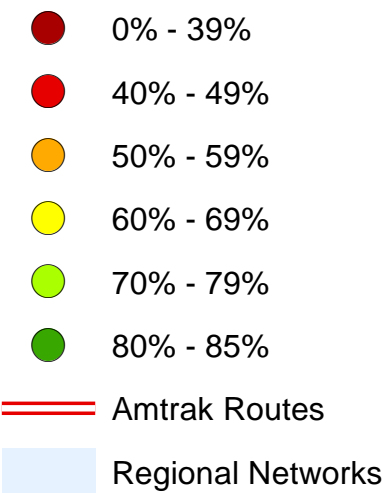
The depiction of measures and data shown on this map is intended to be used as an aid in discussing Mid-term Needs. This depiction of measures and data does not represent Mid-Term Needs. They are two of several inputs used in the determination of Needs and are not the sole determinants.

DRAFT

Amtrak On Time Rail Performance Averages 2018



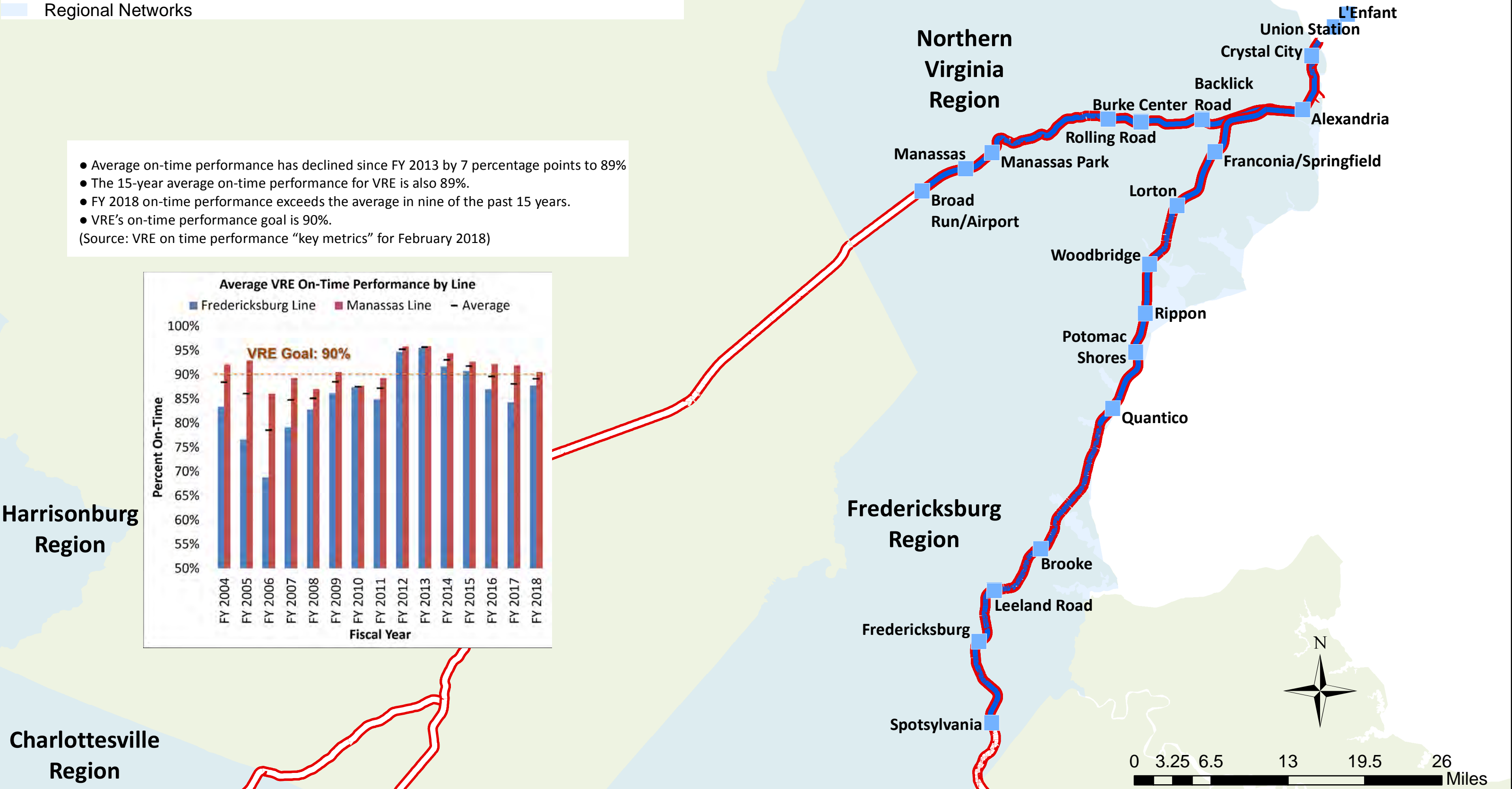
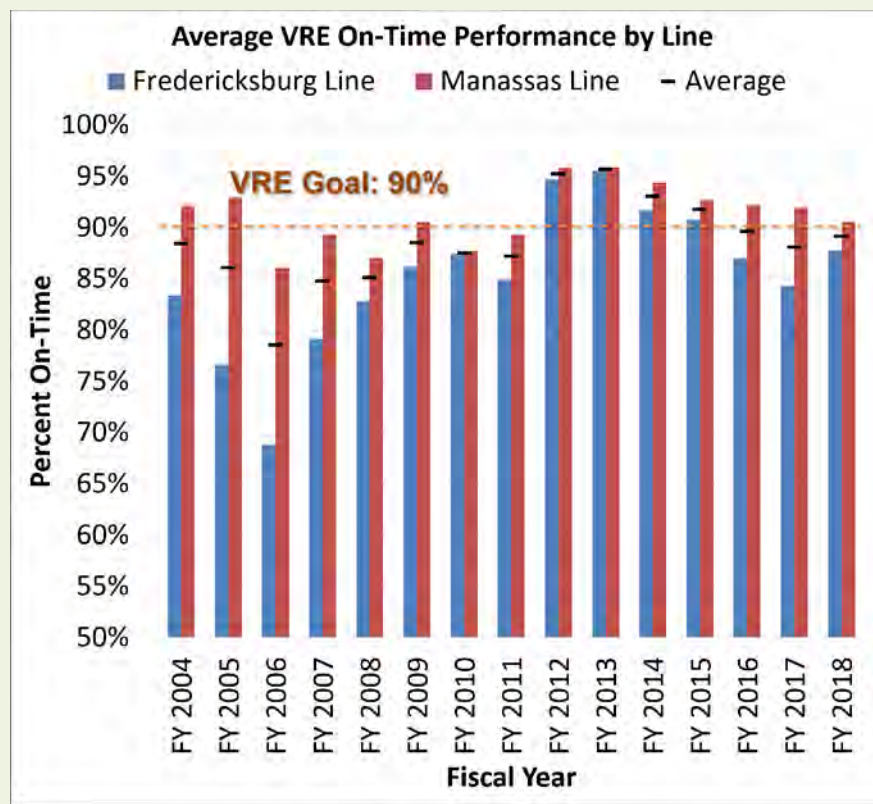
Amtrak Station (Average On-Time Performance)



Virginia Railway Express On-Time Performance

- VRE Stations
- VRE Routes
- Amtrak Routes
- Regional Networks

- Average on-time performance has declined since FY 2013 by 7 percentage points to 89%
 - The 15-year average on-time performance for VRE is also 89%.
 - FY 2018 on-time performance exceeds the average in nine of the past 15 years.
 - VRE’s on-time performance goal is 90%.
- (Source: VRE on time performance “key metrics” for February 2018)

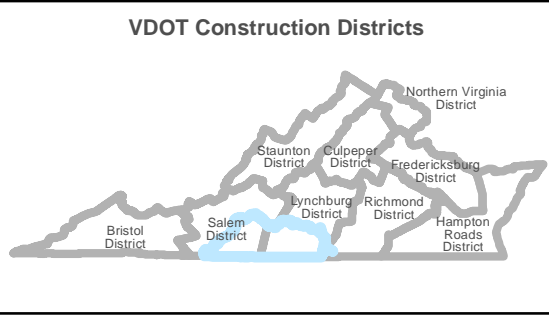


Accessibility to Activity Centers: Regional Workshop - Danville Area

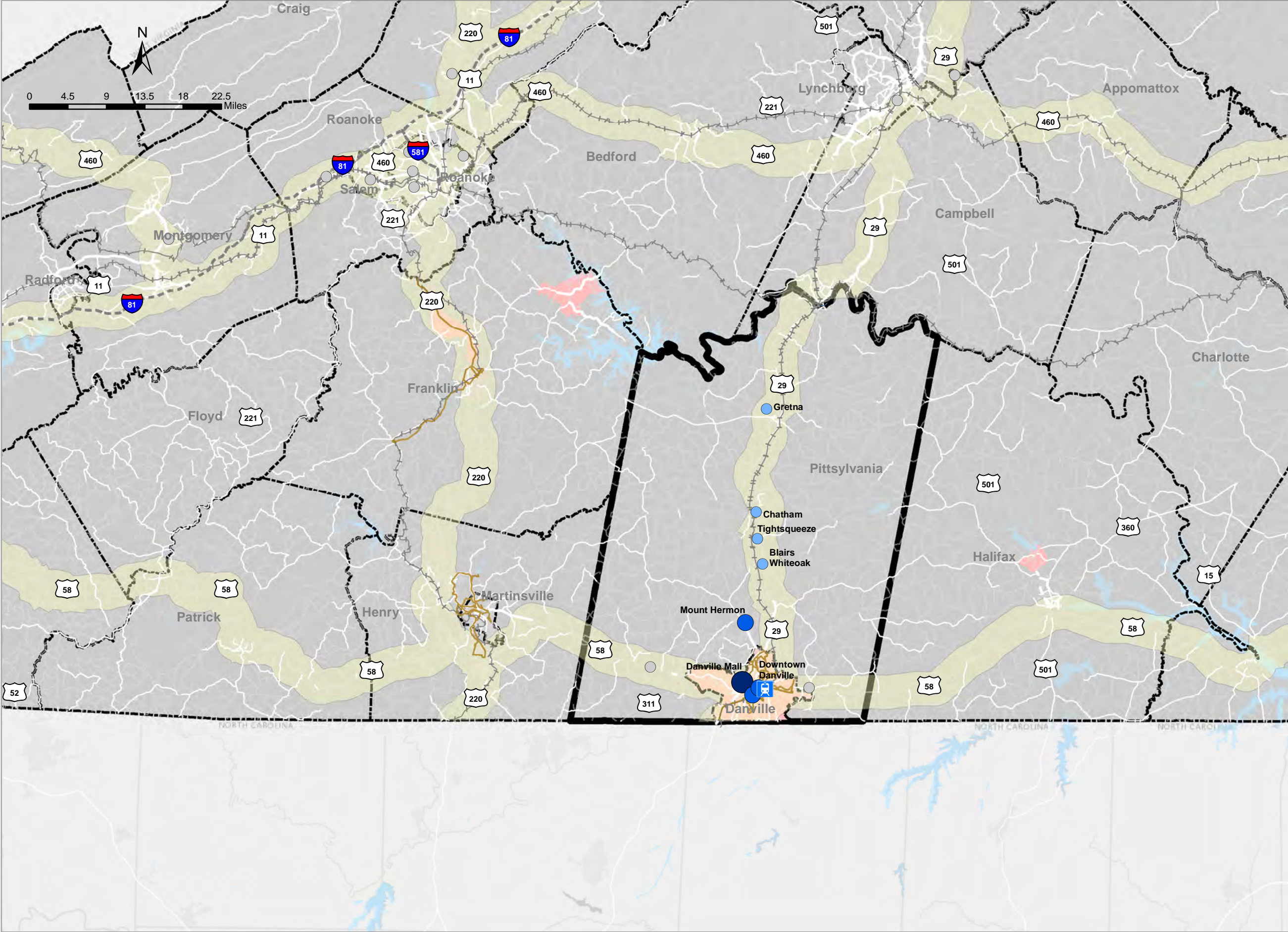
August 1, 2019

Transit Access Deficit to
Local-Serving and Knowledge-Based
Activity Center for Workers
Deficit levels, (high, medium, low)
are relative to each region

- High
- Medium
- Low
- Freight-Dependent Activity Center
- Transit Routes
- Ports
- Amtrak/Passenger Rail Stations
- Airports
- Interstates
- Local Roads
- Annual Average Daily Traffic (AADT)
 - 0
 - 1 - 10,000
 - 10,000 - 25,000
 - 25,000 - 50,000
 - 50,000 - 75,000
 - Greater than 75,000
- Rail Network
- Buffer around Primary COSS Facilities
- Urban Development
- Regional Network
- Counties and Cities
- Water



Date: 8/14/2019



The depiction of measures and data shown on this map is intended to be used as an aid in discussing Mid-term Needs. This depiction of measures and data does not represent Mid-Term Needs. They are two of several inputs used in the determination of Needs and are not the sole determinants.

DRAFT

Disadvantaged Population beyond ¼ mile Access to Transit Service: Regional Workshop - Danville Area

August 1, 2019

**Disadvantaged block groups
beyond 1/4-mile access to
fixed-route transit service and
local rail or BRT service, 80% Threshold**

Disadvantaged and Not Viable for
fixed route service, local rail, or BRT

Disadvantaged and Viable for fixed
route service, local rail, or BRT

Transit Routes

Activity Centers

Freight dependent

Knowledge

Local serving

Ports

Amtrak/Passenger Rail Stations

Airports

Interstates

Local Roads

Annual Average Daily Traffic (AADT)

0

1 - 10,000

10,000 - 25,000

25,000 - 50,000

50,000 - 75,000

Greater than 75,000

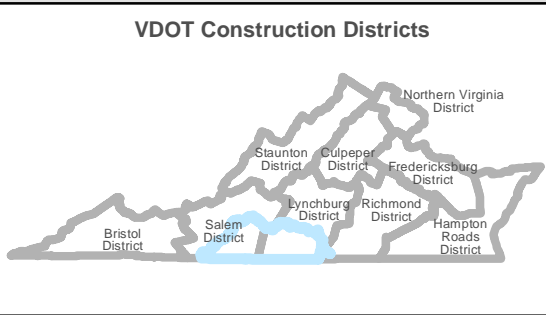
Rail Network

Regional Network

Counties and Cities

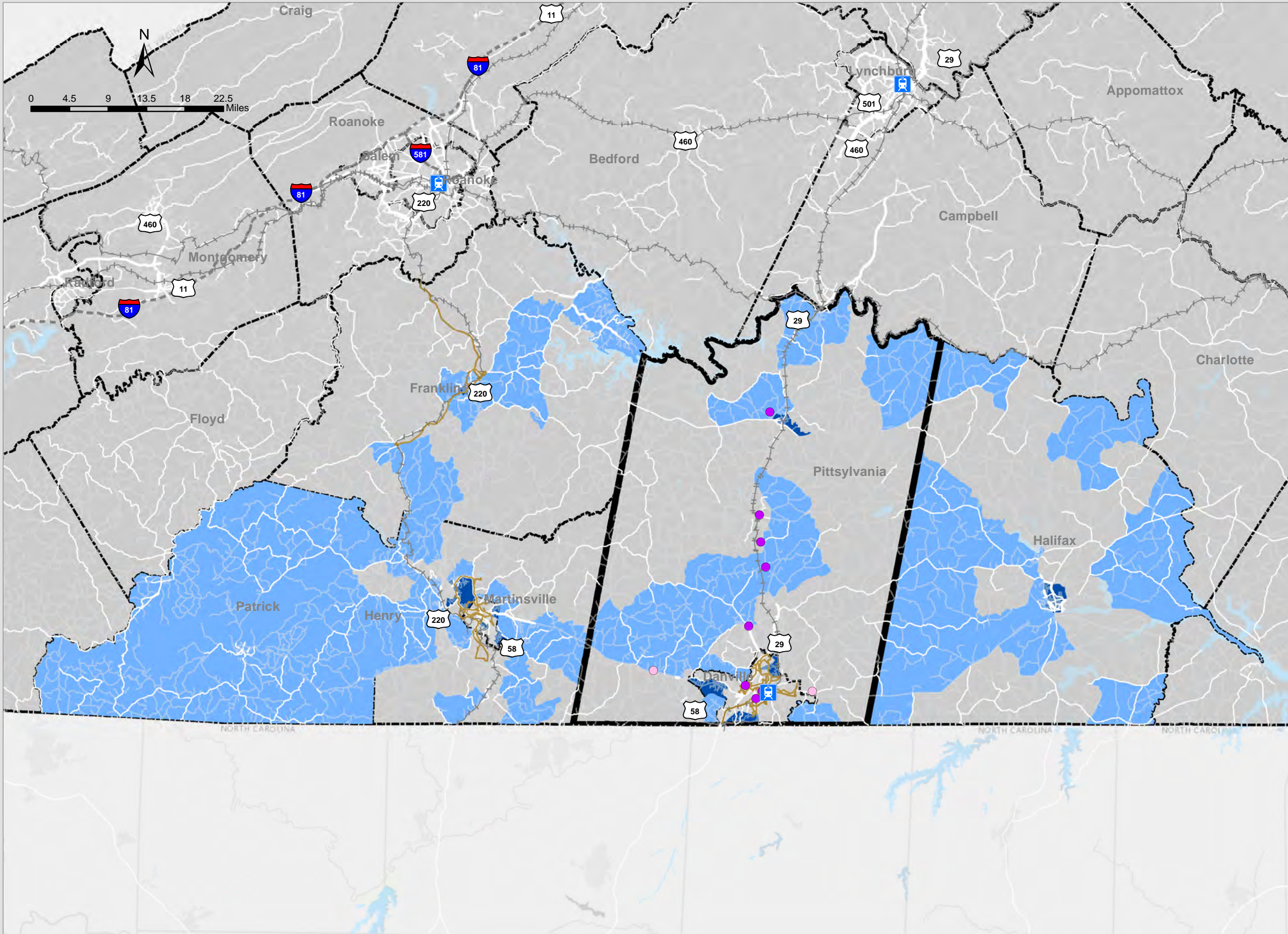
Water

Disadvantaged population access to transit
accounts for existing transit service where the
data is available.



VTRANS VIRGINIA'S
TRANSPORTATION PLAN

Date: 8/14/2019



The depiction of measures and data shown on this map is intended to be used as an aid in discussing Mid-term Needs. This depiction of measures and data does not represent Mid-Term Needs. They are two of several inputs used in the determination of Needs and are not the sole determinants.

DRAFT

Disadvantaged Population beyond ¼ mile Access to Transit Service: Regional Workshop - Danville Area

August 1, 2019

Disadvantaged block groups
beyond 1/4-mile access to
fixed-route transit service and
local rail or BRT service, 90% Threshold

- Disadvantaged and Not Viable for fixed route service, local rail, or BRT
- Disadvantaged and Viable for fixed route service, local rail, or BRT
- Transit Routes

Activity Centers

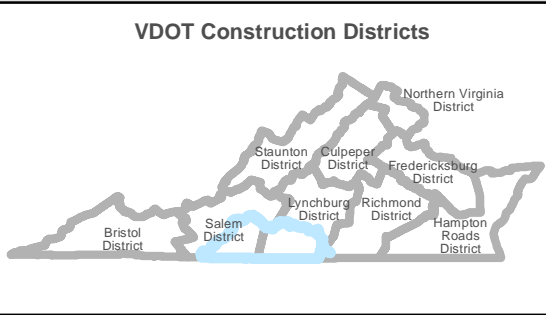
- Freight dependent
- Knowledge
- Local serving
- Ports
- Amtrak/Passenger Rail Stations
- Airports
- Interstates
- Local Roads

Annual Average Daily Traffic (AADT)

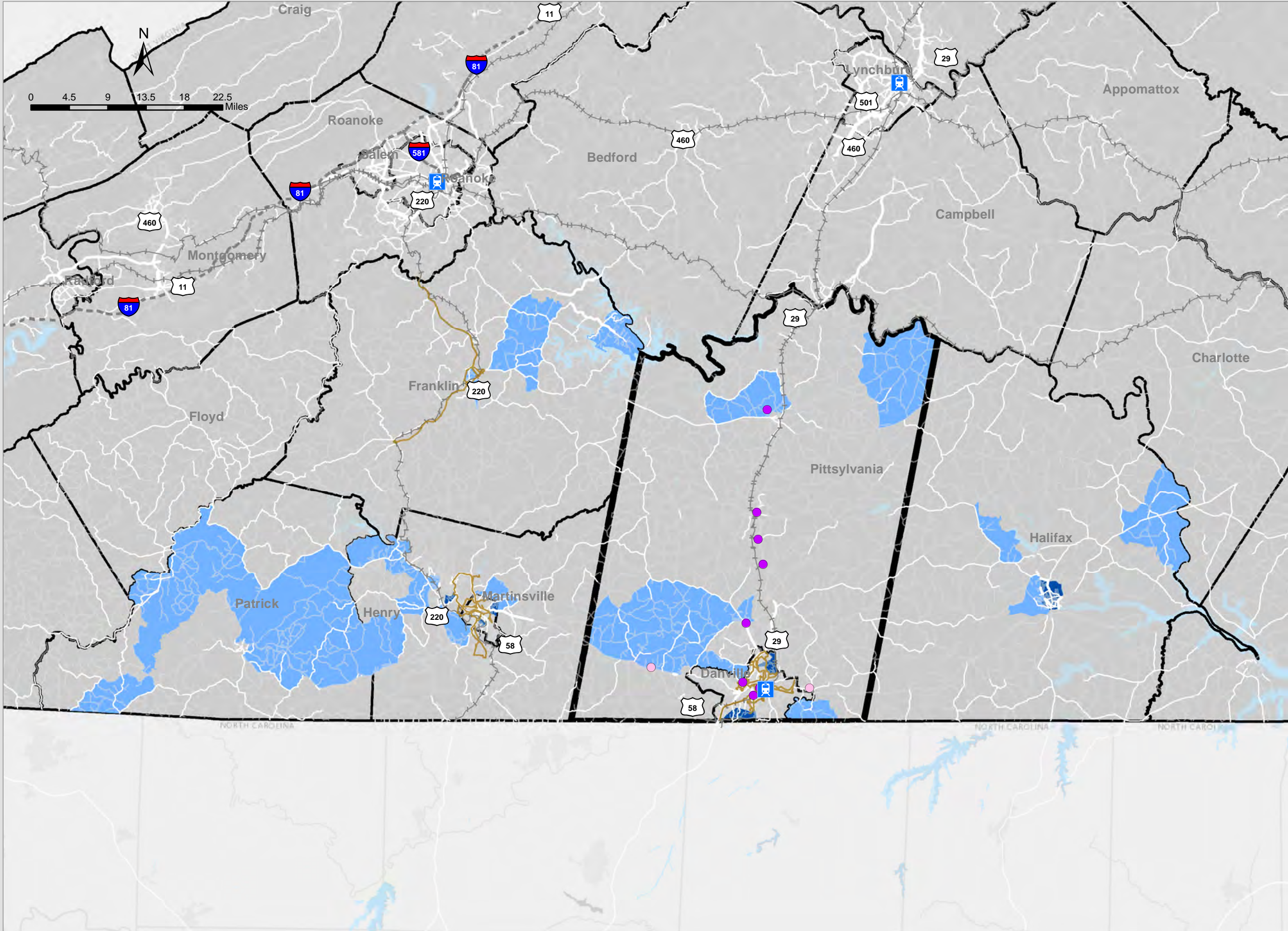
- 0
- 1 - 10,000
- 10,000 - 25,000
- 25,000 - 50,000
- 50,000 - 75,000
- Greater than 75,000

- Rail Network
- Regional Network
- Counties and Cities
- Water

Disadvantaged population access to transit accounts for existing transit service where the data is available.



Date: 8/14/2019



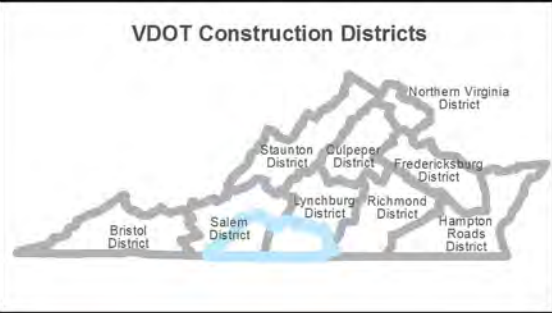
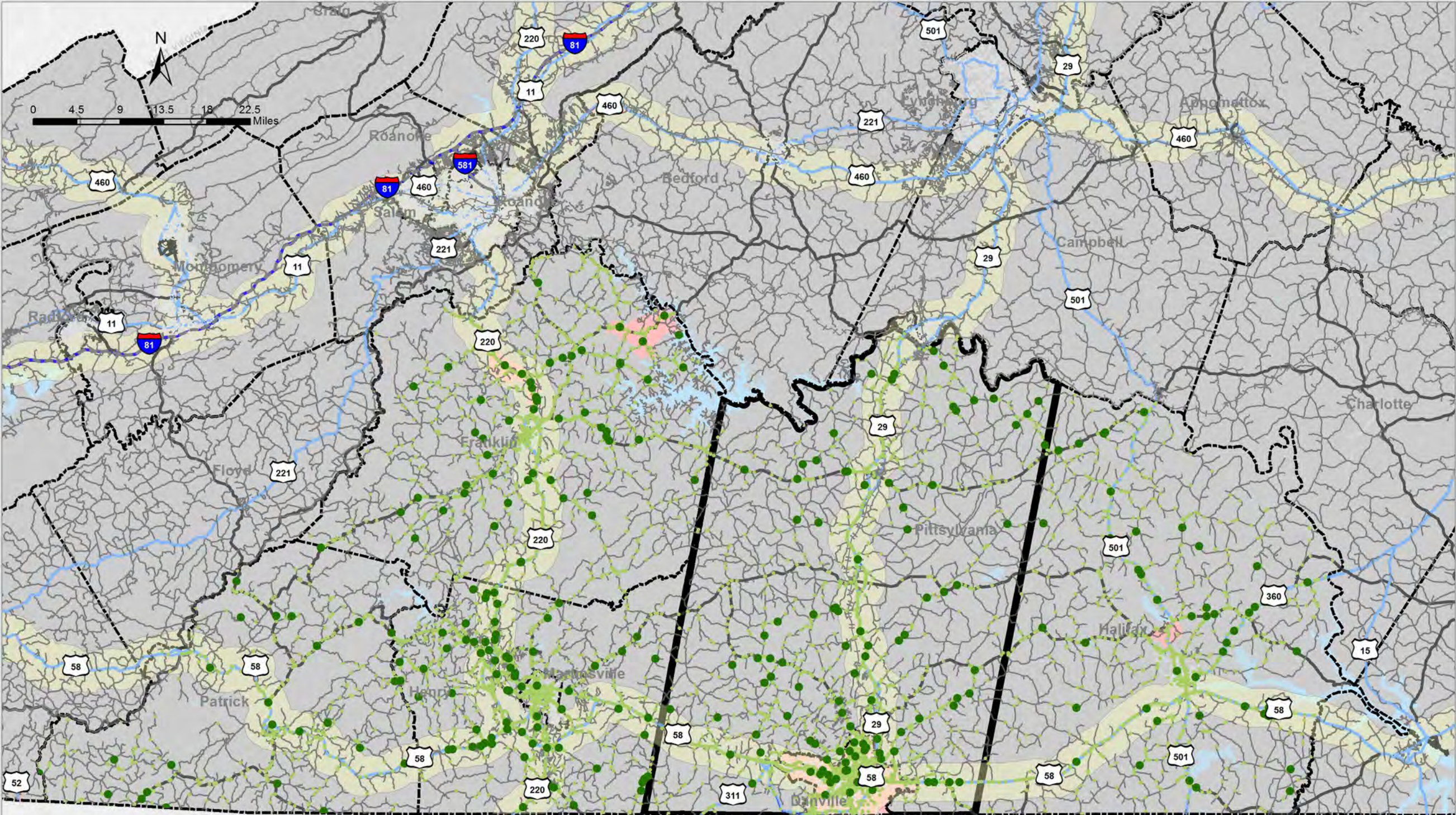
The depiction of measures and data shown on this map is intended to be used as an aid in discussing Mid-term Needs. This depiction of measures and data does not represent Mid-Term Needs. They are two of several inputs used in the determination of Needs and are not the sole determinants.

DRAFT

Vehicular Crashes January 2013 - April 2019: Regional Workshop - Danville Area

August 1, 2019

- Crash Severity**
- Fatal Crash
 - Injury Crash
- Roadway Functional Classes**
- Interstate
 - U.S. Route
 - State Route
 - Frontage Road
 - Secondary Route
 - Urban Road
- Ports
- Amtrak/Passenger Rail Stations
- Airports
- Rail Network
- Buffer around Primary COSS Facilities
- Urban Development Areas
- Regional Network
- Counties and Cities
- Water



The depiction of measures and data shown on this map is intended to be used as an aid in discussing Mid-term Needs. This depiction of measures and data does not represent Mid-Term Needs. They are two of several inputs used in the determination of Needs and are not the sole determinants.